

3D PRINTERS GO ADDITIVE MANUFACTURING

INFO#	Company Name/Website	Model	Technology Category	Build Volume (Inches)	Min. Layer Thickness (mm)	Suggested Pricing (U.S.)
112	3dplatform.com	WorkSeries 100	FFF	39.370x39.370x19.685	0.1	CM
		WorkSeries 200	FFF	39.370x39.370x19.685	0.1	CM
		WorkSeries 300	FFF	39.370x39.370x27.559	0.1	CM
		WorkSeries 400	FFF	39.370x39.370x27.559	0.1	CM
		WorkCenter 500	FFF	50x108x31.5	0.2	CM
113	3dsystems.com	ProJet MJP 2500 and 2500 Plus	Material Jetting	11.6x8.34x5.69	0.032	CM
		ProJet MJP 3600 Dental	Material Jetting	11.2x7.3x8	0.029	CM
		ProJet MJP 3600	Material Jetting	11.75x7.3x8	0.016	CM
		ProJet MJP 3600 Max	Material Jetting	11.75x7.3x8	0.016	CM
		ProJet MJP 3600W	Material Jetting	11.75x7.3x8	0.016	CM
		ProJet MJP 3600W Plus	Material Jetting	11.75x7.3x8	0.016	CM
		ProJet MJP 3600W Max	Material Jetting	11.75x7.3x8	0.016	CM
		ProJet MJP 5600	Material Jetting	20.4x15x11.8	0.013	CM
		ProJet MJP 2500 IC	Material Jetting	11.6x8.34x5.69	0.042	CM
		ProJet MJP 2500 W	Material Jetting	11.6x8.34x5.69	0.016	CM
		ProX SLS 6100	SLS	15x13x18	0.08	CM
		sPro 60 HD-HS	SLS	15x13x18	0.08	CM
		sPro 140	SLS	22x22x18	0.08	CM
		sPro 230	SLS	22x22x30	0.08	CM
		ProJet 6000 HD	SLA	10x10x10	0.025	CM
		ProJet 7000 HD	SLA	15x15x10	0.05	CM
		ProX 800	SLA	25.6x29.5x21.65	0.05	CM
		ProX 950	SLA	59x29.5x21.65	0.05	CM
		FabPro 1000	DLP	4.9x2.76x4.72	0.03	CM
		Figure 4 Jewelry	DLP	4.9x2.8x7.7	0.03	CM
Figure 4 Standalone	DLP	4.9x2.8x7.7	0.02	CM		
Figure 4 Modular	DLP	4.9x2.8x13.6	0.02	CM		
Figure 4 Production	DLP	4.9x2.8x13.6	0.02	CM		
NextDent 5100	DLP	4.9x2.8x7.7	0.03	CM		
ProJet CIP 260Plus	Binder Jetting	9.3x7.3x5	0.1	CM		
ProJet CIP 360	Binder Jetting	8x10x8	0.1	CM		
ProJet CIP 460Plus	Binder Jetting	8x10x8	0.1	CM		
ProJet CIP 660Pro	Binder Jetting	10x15x8	0.1	CM		
ProJet CIP 860Pro	Binder Jetting	20x15x9	0.1	CM		
DMP Flex 100	DMP	3.94x3.94x3.54	0.01	CM		
ProX DMP 200	DMP	5.5x5.5x4.53	0.01	CM		
DMP Factory 350	DMP	10.82x10.82x16.54	0.005	CM		
DMP Flex 350	DMP	10.82x10.82x16.54	0.005	CM		
DMP Factory 500 Solution	DMP	19.7x19.7x19.7	0.002	CM		
ProX DMP 200 Dental	DMP	5.5x5.5x4.53	0.01	CM		
DMP Dental 100	DMP	3.94x3.94x3.54	0.01	CM		
114	3dceram.com	C100	SLA	3.9x3.9x3.9	0.1	CM
		C100 Hybrid	SLA	3.9x3.9x3.9	0.1	CM
		C900	SLA	11.8x11.8x3.9	0.1	CM
		C900 Hybrid	SLA	11.8x11.8x3.10	0.1	CM
		C36000	SLA	23.62x23.62x11.81	0.1	CM
115	Sintr, sold by Plural Additive Manufacturing	Spectral 30	CM	11.6x11.6x11.6	0.1	CM
116	afinia.com	H800+	Material Extrusion	8x10x8	0.1	\$1,699
		H400+	Material Extrusion	4.7x4.7x4.7	0.15	\$749
		H+1	Material Extrusion	10x8x8.8	CM	\$2,199
		STUDIO G2	Material Extrusion	39x19.7x19.7	0.1	CM
117	bigrep.com	ONE	Material Extrusion	39.5x39.5x39.5	0.1	CM
		PRO	Material Extrusion	42.5x38.5x37.7	0.4 to 0.6	CM
		M2	DLS	7.4x4.6x12.8	CM	CM
118	carbon3d.com	MAAM 120	FFF	41.3x40x39.4	0.1	CM
		MAAM 101	FGF	41.3x40x39.4	0.3	CM
		MAAM 111	FFF and FGF	41.3x40x39.4	0.1	CM
		BAAM 603	FGF	140x65x36	1.27	CM
		BAAM 606	FGF	140x65x72	1.27	CM
		BAAM 608	FGF	140x65x98	1.27	CM
		BAAM 806	FGF	240x90x72	1.27	CM
120	Creative 3D Technologies, Inc.	Duo	Material Extrusion	35.8x18.1x26.5	0.01	\$8,800
121	desktopmetal.com	Studio	Material Extrusion	12x8x8	0.05	CM
		Production	Binder Jetting	19.2 x 15 x 10.2	0.03	CM
		Shop System 4L	Binder Jetting	13.8x8.7x2	0.05	CM
		Shop System 8L	Binder Jetting	13.8x8.7x3.9	0.05	CM
		Shop System 12L	Binder Jetting	13.8x8.7x5.9	0.05	CM
		Shop System 16L	Binder Jetting	13.8x8.7x7.9	0.05	CM
		Fiber HT	QAFP and FFF	12.2x9.4x10.6	0.05	\$5,595/year
Fiber LT	QAFP and FFF	12.2x9.4x10.6	0.05	\$3,495/year		
122	dynamical3d.com	DT Lite	FFF	23.6x17.7x17.7	0.05	CM
		DT60	FFF	23.7x17.7x17.7	0.05	CM
		HT45	FFF	17.7x11.8x11.8	0.05	CM
123	envisiontec.com	SLCOM 1	Sheet Lamination	30x24x24	0.1	CM
		Micro Plus Advantage	DLP	2.36x1.77x3.94	0.025	CM
		Vida	DLP	5.5x3.1x3.95	0.025	CM



LITHOZ

VISIT US AT:
WWW.LITHOZ.COM

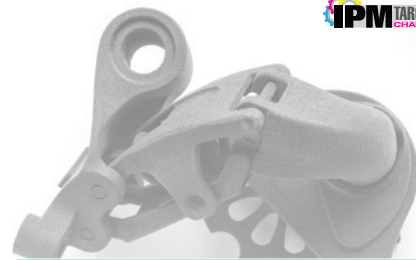
LITHOZ CERAFAB SYSTEM

CERAMIC 3D PRINTING, FROM FIRST PART TO LARGE-SCALE PRODUCTION

Find us on:
in Lithoz GmbH / @LithozAustria

3D PRINTING BUILDS DONE

MANUFACTURING OPTIONS



INFO#	Company Name/Website	Model	Technology Category	Build Volume (Inches)	Min. Layer Thickness (mm)	Suggested Pricing (U.S.)		
123	EnvisionTEC, continued envisiontec.com	Micro Plus HD	DLP	1.77x1.10x3.94	0.025	CM		
		Vida HD	DLP	3.78x2.15x3.94	0.05	CM		
		Micro Plus XL	DLP	4.72x2.95x3.35	0.025	CM		
		Perfactory P4K 62	DLP	6.3x3.9x8.7	0.025	CM		
		Perfactory P4K 75	DLP	7.6x4.7x8.7	0.025	CM		
		Perfactory P4K 90	DLP	9.1x5.7x8.7	0.025	CM		
		Envision One cDLM Mechanical	cDLM	7.09x3.98x6.9	0.025	CM		
		Xtreme HD 3SP	3SP	8.15x15x14	0.05	CM		
		Xtreme 3SP	3SP	10x14.25x13	0.05	CM		
		Xede 3SP	3SP	18x18x18	0.05	CM		
		Vida cDLM	cDLM	5.7x3.2x3.94	0.025	CM		
		Vida	DLP	5.5x3.1x3.95	0.025	CM		
		Vector 3SP	3SP	11.8x6.9x10.8	0.05	CM		
		ULTRA 3SP	3SP	10.5x6.9x7.6	0.05	CM		
124	EOS eos-na.com	Formiga P 110 Velocis	Powder Bed Fusion	7.9x9.8x13	0.06	CM		
		EOS P 396	Powder Bed Fusion	13.4x13.4x23.6	0.06	CM		
		EOS P 500	Powder Bed Fusion	19.7x13x15.7	0.06	CM		
		EOS P 770	Powder Bed Fusion	27.6x15x22.9	0.06	CM		
		EOS P 800	Powder Bed Fusion	27.6x15x22.05	0.12	CM		
		EOS P 810	Powder Bed Fusion	27.6x15x15	CM	CM		
		EOS M 100	Powder Bed Fusion	3.9x3.7	CM	CM		
		EOS M 290	Powder Bed Fusion	9.85x9.85x12.8	CM	CM		
		EOS M 300-4	Powder Bed Fusion	11.8x11.8x15.8	CM	CM		
		EOS M 400	Powder Bed Fusion	15.8x15.8x15.8	CM	CM		
		EOS M 400-4	Powder Bed Fusion	15.8x15.8x15.8	CM	CM		
		PRECIOUS M 080	Powder Bed Fusion	3.15x3.74	CM	CM		
		125	ExOne exone.com	S-Max+	Binder Jetting	23.6x39.4x70.9	0.28	CM
				S-Max	Binder Jetting	27.6x39.4x70.9	0.24	CM
S-Print	Binder Jetting			15.75x19.68x31.5	CM	CM		
M-Print	Binder Jetting			15.75x19.68x31.5	CM	CM		
M-Flex	Binder Jetting			9.8x9.8x15.7	.05	CM		
Innovent+	Binder Jetting			2.5x2.5x6.3	.03	CM		
126	Fargo Additive Manufacturing Equipment 3D, LLC lulzbot.com	LulzBot TAZ 6	Material Extrusion	9.8x11.2x11.2	0.05	\$2,500		
		LulzBot Mini	Material Extrusion	6.2x6x6	0.05	\$1,250		
127	FormAlloy formalloy.com	X2	DED	7.9x7.9x7.9	0.15	CM		
		L2	DED	7.9x7.9x7.9	0.15	CM		
		X5	DED	19.7x19.7x19.7	0.15	CM		
		L5	DED	19.7x19.7x19.7	0.15	CM		
128	Formlabs, Inc. formlabs.com	Form 2	SLA	5.7x5.7x6.9	0.025	\$3,499		
		Form 3	LFS	5.7x5.7x7.3	0.025	CM		
		Form 3L	LFS	13.2x7.9x11.8	0.025	CM		
		Concept Laser Mlab/Mlab R	Powder Bed Fusion	3.5x3.5x3.5	0.02	CM		
129	GE Additive ge.com/additive	Concept Laser Mlab 200R	Powder Bed Fusion	4x4x4	0.02	CM		
		Concept Laser M1	Powder Bed Fusion	9.8x9.8x9.8	0.02	CM		
		Concept Laser M2	Powder Bed Fusion	9.8x9.8x13.78	0.02	CM		
		Concept Laser M2 Multilaser	Powder Bed Fusion	9.8x9.8x13.78	0.02	CM		
		Concept Laser M Line	Powder Bed Fusion	19.7x19.7x15.75	0.02	CM		
		Concept Laser X Line 2000R	Powder Bed Fusion	31.5x15.75x19.7	0.05	CM		
		Arcam AZX	Powder Bed Fusion	7.9x7.9x11.8	0.050	CM		
		Arcam Q10plus	Powder Bed Fusion	7.9x7.9x11.8	0.050	CM		
		Arcam Q20plus	Powder Bed Fusion	15.78x11	0.090	CM		
		Arcam Spectra H	Powder Bed Fusion	9.8x16.9	0.070	CM		
		130	GEFFERTEC gefertec.de	arc403	WAAM	31.5x35.4x39.4	30	\$390,000
arc405	WAAM			15.7x15.7x19.7	30	\$500,000		
arc603	WAAM			43.3x55.1x67	30	\$730,000		
arc605	WAAM			35.4x35.4x27.6	30	\$890,000		
HP Jet Fusion 3D 5200	Binder Jetting			15x11.2x15	0.003	CM		
131	HP Inc. hp.com	HP Jet Fusion 3D 4200	Binder Jetting	15x11.2x15	0.003	CM		
		HP Jet Fusion 3D 580/540	Binder Jetting	13.1x7.5x9.8	0.003	CM		
		HP Jet Fusion 3D 380/340	Binder Jetting	13.1x7.5x9.8	0.003	CM		
		HP Metal Jet	Binder Jetting	16.9x12.6x7.9	0.05	CM		
		LIQ 320	LAM	9.8 x 12.6 x 5.9	0.22	CM		
132	InnovatiQ GmbH + Co KG nnovatiq.com	TiQ 5	FFF	19.7x15.7x17.7	0.02	CM		
		xi000	FFF	39.4x32x26	0.1	CM		
		x400	FFF	15.4x15.7x12.2	0.05	CM		
		CeraFab 7500	DLP	3.0x1.7x6.7	0.1	CM		
		CeraFab 7500 Dental	DLP	3.0x1.7x6.7	0.1	CM		
133	Lithoz lithoz.com	CeraFab System S25	DLP	2.52x1.57x12.6	0.1	CM		
		CeraFab System S65	DLP	4.05x2.52x12.6	0.1	CM		
		CeraFab System S230	DLP	7.56x4.72x19.68	0.25	CM		
		Replicator+	Material Extrusion	6.5x7x11.6	0.1	\$2,799		
134	MakerBot Industries makerbot.com	Replicator Z18	Material Extrusion	18x12x11.8	0.1	\$6,499		
		METHOD 3D printer	Material Extrusion	7.5x7.5x7.5	0.02	\$4,999		
		METHOD X 3D Printer	Material Extrusion	7.5x7.5x7.5	0.02	\$6,499		
		METHOD Carbon Fiber Edition	Material Extrusion	7.5x7.5x7.5	0.02	\$4,999		
		METHOD X Carbon Fiber Edition	Material Extrusion	7.5x7.5x7.5	0.02	\$6,999		
		Onyx One	Material Extrusion	12.6x5.2x6.06	CM	CM		
135	Markforged, Inc. markforged.com	Onyx Pro	Material Extrusion	12.6x5.2x6.06	CM	CM		
		Mark Two	Material Extrusion	12.6x5.2x6.06	CM	CM		

KEY

3SP = Scan Spin and Selectively Photocure
 cDLM = Continuous DLP
 CM = Contact Manufacturer
 DED = Directed Energy Deposition
 DLP = Digital Light Processing
 DLS = Digital Light Synthesis
 DMP = Direct Metal Printing
 FDM = Fused Deposition Modeling
 FFF = Fused Filament Fabrication
 FGF = Fused Granular Fabrication

LAM = Liquid Additive Manufacturing
 LFS = Low Force Stereolithography
 mm = Millimeters
 NPI = NanoParticle Jetting
 SLA = Stereolithography
 SLS = Selective Laser Melting
 SLS = Selective Laser Sintering
 WAAM = Wire Arc Additive Manufacturing
 QAAP = Micro Automated Fiber Placement

Roboze
ARGO 500

ARGO SUBSCRIPTION PLAN
the best-fitting plan for innovators

HARDWARE MATERIALS WARRANTY ENGINEERING SERVICE

Pay for the use, no Capex involved!

Pick the best subscription plan to access your Production Additive Machine ARGO 500 with key services and support directly in your shopfloor.

info@roboze.com

3D PRINTERS GET BUILDS DONE

ADDITIVE MANUFACTURING OPTIONS

KEY

3SP = Scan Spin and Selectively Photocure
 cDLM = Continuous DLP
 CM = Contact Manufacturer
 DED = Directed Energy Deposition
 DLP = Digital Light Processing
 DLS = Digital Light Synthesis
 DMP = Direct Metal Printing
 FDM = Fused Deposition Modeling
 FFF = Fused Filament Fabrication
 FGF = Fused Granular Fabrication

LAM = Liquid Additive Manufacturing
 LFS = Low Force Stereolithography
 mm = Millimeters
 NDI = NanoParticle Jetting
 SLA = Stereolithography
 SLM = Selective Laser Melting
 SLS = Selective Laser Sintering
 WAAM = Wire Arc Additive Manufacturing
 QAFP = Micro Automated Fiber Placement

INFO#	Company Name/Website	Model	Technology Category	Build Volume (Inches)	Min. Layer Thickness (mm)	Suggested Pricing (U.S.)
135	Markforged, Inc., <i>continued</i> markforged.com	X3	Material Extrusion	13x10.6x79	CM	CM
		X5	Material Extrusion	13x10.6x79	CM	CM
		X7	Material Extrusion	13x10.6x79	CM	CM
136	Massivit 3D massivit3d.com	Massivit 1800 Flagship 3D Printer	Material Jetting	57x44x70	CM	CM
		Massivit 1500 Exploration 3D Printer	Material Jetting	58x46x54	CM	CM
137	MELD Manufacturing meldmanufacturing.com	K2	CM	82.68x43.4x39.37	CM	CM
		L3	CM	45x23x23	CM	CM
		B8	CM	36x12x12	CM	CM
138	Mimaki USA, Inc. mimakusa.com	3DUJ-553	Material Jetting	12x20x20	0.019	CM
		3DUJ-2207	Material Jetting	8x8x3	0.03	CM
		3DGD-1800	Gel Dispensing	57x44x70	0.8	CM
139	RIZE INC. rize3d.com	RIZE ONE	Material Extrusion/Jetting	12x8x6	0.125	\$31,500
		XRIZE	Material Extrusion/Jetting	12x8x8	0.125	\$55,000
140	Sciaxy, Inc. sciaxy.com	EBAM 40	DED	CM	CM	CM
		EBAM 110	DED	110x110x110	CM	CM
		EBAM150	DED	150x150x120	CM	CM
		EBAM 200	DED	200x110x110	CM	CM
		EBAM 300	DED	300x108x132	CM	CM
141	Sharebot srl sharebot.it	Sharebot Q	FFF	157x118x118	0.1	\$8,000
		Sharebot QXXL	FFF	275x137x137	0.1	\$10,000
		Sharebot Qdual	FFF	275x110x118	0.1	\$12,000
		Sharebot Qwarm	FFF	157x118x118	0.1	\$30,000
		Snowwhite2	SLS	4x4x4	0.1	\$45,000
142	SLM Solutions slm-solutions.com	SLM125	SLM	2.5x2.5x4	0.02	\$100,000
		SLM280	SLM	4.92x4.92x4.92	0.02	CM
		SLM280 PS	SLM	11x11x14	0.02	CM
		SLM500	SLM	11x11x14	0.02	CM
		SLM800	SLM	19.7x11x33.5	0.02	CM
143	Stacker LLC stacker3d.com	S4 Industrial 3D Printer	Material Extrusion	13.98x20.67	0.1	\$10,995
		S2 Industrial Grade 3D Printer	Material Extrusion	15.35x12.4x20.66	0.1	\$6,999
		S4-XL Industrial Grade 3D Printer	Material Extrusion	24x24x24	0.1	\$4,000
144	Stratays stratays.com	Continuous Build 3D Printer	Automated FDM	4.7x4.7x4.7	0.127	CM
		F120	FDM	CM	CM	CM
		F170	FDM	10x10x10	CM	CM
		F270	FDM	12x10x12	CM	CM
		F370	FDM	14x10x14	CM	CM
		Fortus 380 Carbon Fiber Edition	FDM	14x12x12	CM	CM
		Fortus 450MC	FDM	16x14x16	CM	CM
		F900	FDM	36x24x36	CM	CM
		V650 Flex	SLA	20x20x23	0.1016	CM
		Connex 1 Objet260	PolyJet	19.3x15.4x79	0.01524	CM
		Connex 1 Objet500	PolyJet	19.3x15.4x79	0.01524	CM
		Connex 3 Objet350	PolyJet	13.4x13.4x79	0.01524	CM
		Connex 3 Objet500	PolyJet	19.3x15.4x79	0.01524	CM
		J700 Dental	PolyJet	19.3x15.35	0.0508	CM
		J720 Dental	PolyJet	19.3x15.35x79	0.01997	CM
		J750 Digital Anatomy	PolyJet	19.3x15.35x79	0.01997	CM
		J850	PolyJet	19.3x15.35x79	0.01997	CM
		Objet1000 Plus	PolyJet	39.3x31.4x19.6	0.01524	CM
		Objet30 Dental Prime	PolyJet	11.81x7.87x3.94	0.01524	CM
Objet30 Prime	PolyJet	11.57x7.55x5.85	0.01524	CM		
Objet30 Pro	PolyJet	11.57x7.55x5.85	0.01524	CM		
145	Tethon 3D tethon3d.com	Bison 1000	DLP	110x60x138	0.025	\$17,495
146	Thermwood Corporation thermwood.com	LSAM	CM	10x20x10	2.54	CM
		LSAM MT	CM	10x10x5	2.54	CM
147	Ultimaker ultimaker.com	Ultimaker S5	FFF	330x240x300	0.25 to 0.8	\$5,995
		Ultimaker S3	FFF	190x230x200	0.25 to 0.8	\$3,850
		Ultimaker 2+ Connect	FFF	225x220x205	0.25 to 0.8	\$2,499
		Ultimaker S5 Pro Bundle	FFF	330x240x300	0.25 to 0.8	\$9,100
148	VELO3D velo3d.com	Sapphire Metal AM Printer	Powder Bed Fusion	12.4x15.75	0.05	\$15M
149	Xact Metal xactmetal.com	XM200C	Powder Bed Fusion	5x5x5	0.02	\$90,000
		XM200C-E (Performance Model)	Powder Bed Fusion	5x5x6	0.02	\$110,000
		XM200C-ER (Reactive Model)	Powder Bed Fusion	5x5x7	0.02	\$130,000
		XM200S	Powder Bed Fusion	5x5x5	0.02	\$145,000
		XM300C	Powder Bed Fusion	10x13x13	0.02	CM
150	XJET xjet3d.com	Carmel400C	NPI	19.68x11.02x7.87	0.01	CM
		Carmel400M	NPI	19.68x11.02x7.87	0.01	CM
151	XY2printing, Inc. pro.xy2printing.com	PartPro350 xBC	Binder Jetting	8.7x13.8x79	0.1	CM
		PartPro200 xTCC	FFF	7.2x7.2x5.9	0.1	CM
		CastPro100 xP	DLP	2.52x1.57x4.72	0.025	CM
		PartPro120 xP	DLP	4.5x2.5x3.9	CM	CM
		PartPro100 xP	DLP	2.52x1.57x4.72	0.025	CM
		PartPro300 xT	FFF	11.6x11.8x11.8	CM	CM
		MigPro230 xS	SLS	9x9x9	0.08	CM

